

# Word of the Day

## Spring Term 2024

Week 32 – 13th May 2024



### This Week's Words

**Grasshopper**

tear  
office  
spare  
chipped  
lift

**Shinobi**

tolerate  
mutter  
fixation  
unveil

**VN VOCABULARY**

### Grasshopper Word of the Day

**Word of the Day:** picnic  
*(pic-nic)*

**Word Class:** (verb / noun)

**Definition:** If you tear paper, cloth, or another material, or if it tears, you pull it into two pieces or you pull it so that a hole appears in it.

**Phrases:**

**Synonym:** word  
word

**Antonym:** word  
word

**Rhyme:** word  
word

**Link Word:** word  
word

**Phrase Number One:** The was a hole in Freddie's new school picnic.

**Phrase Number Two:**

### Shinobi Word of the Day

**Word of the Day:** tear  
*(tear)*

**Word Class:** (verb / noun)

**Definition:** If you tear paper, cloth, or another material, or if it tears, you pull it into two pieces or you pull it so that a hole appears in it.

**Phrases:**

**Synonym:** word  
word

**Antonym:** word  
word

**Prefix / Suffix:** word  
word

**Link Word:** word  
word

**Phrase Number One:** The was a tear in Freddie's new school book.

**Phrase Number Two:**

'Words unlock the doors to a world of understanding...'

# **This Week's Words**

## **Grasshopper**

**arrive**

**brave**

**couple**

**explore**

**glow**

## **Shinobi**

**abhorrent**

**crumble**

**forgive**

**marrow**

**savage**



**VOCABULARY NINJA**

# Grasshopper (Tier 1)

**arrive**

**brave**

**couple**

**explore**

**glow**



**VOCABULARY NINJA**

# **Shinobi (Tier 2)**

**abhorrent**

**crumble**

**forgive**

**narrow**

**savage**



**VOCABULARY NINJA**



# Grasshopper Word of the Day

Word of the Day:

Pronunciation / Syllables

arrive  
(ar-rive)

Word Class  
(verb)

Definition:

When a person or vehicle arrives at a place, they come to it at the end of a journey.



Teddy **arrived** early for school.

Synonym:

enter

appear

Antonym:

leave

miss

Prefix / Suffix:

-ed

-al

Rhyme:

five

drive

Link Word:

late

plane



# Grasshopper Word of the Day

Word of the Day:

Pronunciation / Syllables

**brave**  
(*brave*)

Word Class  
(adjective)

## Definition:

Someone who is brave is willing to do things which are dangerous and does not show fear in difficult or dangerous situations.



Cali was **brave** and stood up in front of the class.

Synonym:

adventurous

daring

Antonym:

afraid

fearful

Prefix / Suffix:

-ry

-est

Rhyme:

gave

save

Link Word:

enough

people



# Grasshopper Word of the Day

Word of the Day:

Pronunciation / Syllables

**couple**  
(cou-ple)

Word Class  
(noun)

Definition:

If you refer to a couple of people or things, you mean two of them.



A **couple** of children offered to help tidy the classroom.

Synonym:

twosome

team

Antonym:

individual

Prefix / Suffix:

un-

-ed

Rhyme:

supple

Link Word:

days

sweets



# Grasshopper Word of the Day

Word of the Day:

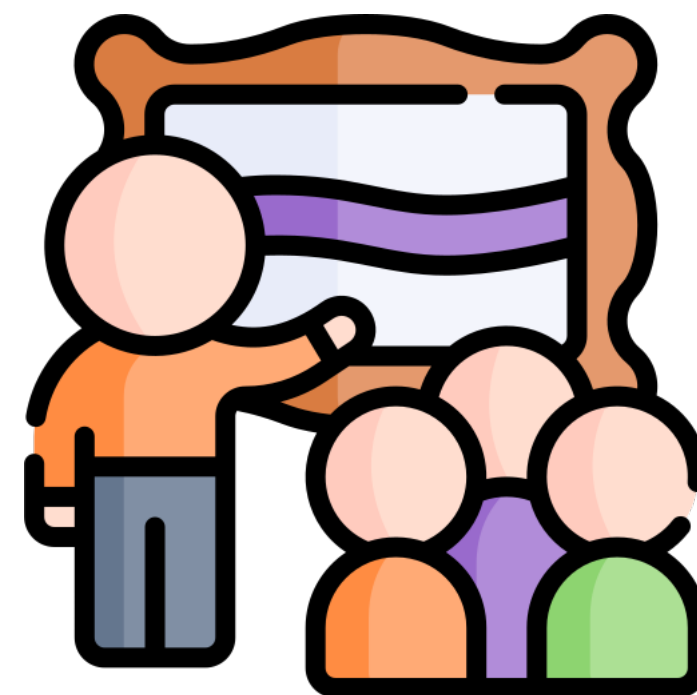
Pronunciation / Syllables

explore  
(ex-plore)

Word Class  
(verb)

Definition:

If you explore a place, you travel around it to find out what it is like.



The class enjoyed **exploring** the museum.

Synonym:

examine

seek

Antonym:

find

neglect

Prefix / Suffix:

-ed

-er

Rhyme:

before

floor

Link Word:

city

want to





# Grasshopper Word of the Day

Word of the Day:

Pronunciation / Syllables

glow  
(glow)

Word Class  
(verb / noun)

Definition:

If something glows, it produces a dull, steady light.



There was a mesmerising **glow** from the flame.

Synonym:

blaze

gleam

Antonym:

dull

Prefix / Suffix:

a-

-ing

Rhyme:

know

low

Link Word:

lantern

fire



# Shinobi Word of the Day

Word of the Day: **abhorrent**

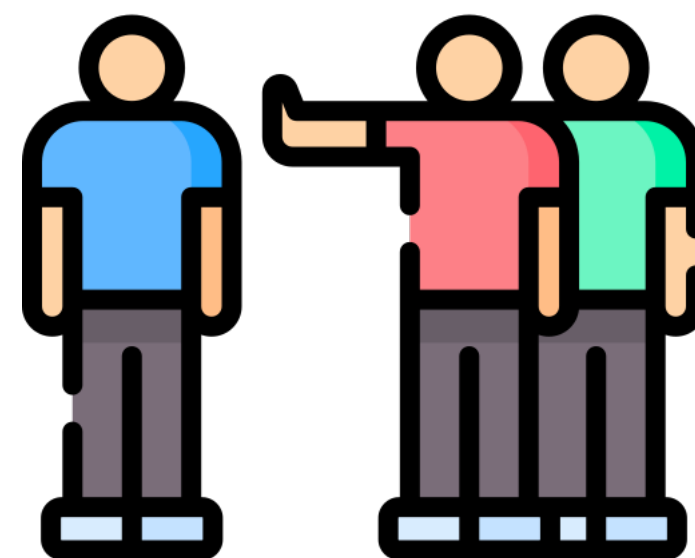
Word Class  
(adjective)

Pronunciation / Syllables

(*ab-hor-rent*)

## Definition:

If something is abhorrent to you, you hate it very much or consider it completely unacceptable.



Mrs Mull emphasised how **abhorrent** discrimination is.

Synonym:

repulsive  
loathsome

Antonym:

Prefix / Suffix:

Rhyme:

torrent  
warrant

Link Word:

discrimination  
it's



# Shinobi Word of the Day

Word of the Day:

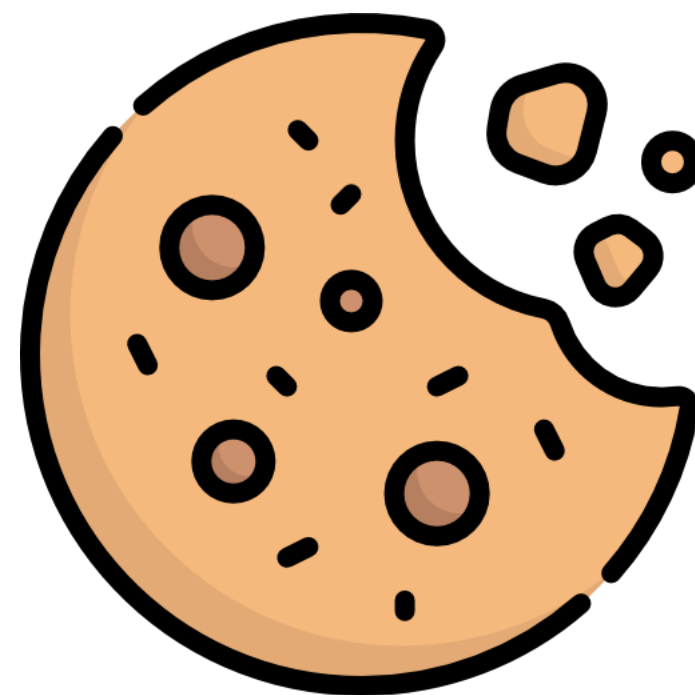
**crumble**  
(*crum-ble*)

Word Class  
(verb)

Pronunciation / Syllables

## Definition:

If something crumbles, or if you crumble it, it breaks into a lot of small pieces.



Joseph's biscuit **crumbled** when he picked it up.

Synonym:

collapse

decay

Antonym:

build

unite

Prefix / Suffix:

-ed

-ing

Rhyme:

humble

stumble

Link Word:

into

away



# Shinobi Word of the Day

Word of the Day:

Pronunciation / Syllables

**forgive**  
(for-give)

Word Class  
(verb)

## Definition:

If you forgive someone who has done something bad or wrong, you stop being angry with them and no longer want to punish them.



Chun **forgave** Ezra for knocking over her drink.

Synonym:

excuse  
condone

Antonym:

condemn

Prefix / Suffix

-ness  
-en

Rhyme:

live  
sieve

Link Word:

me  
anything



# Shinobi Word of the Day

Word of the Day:

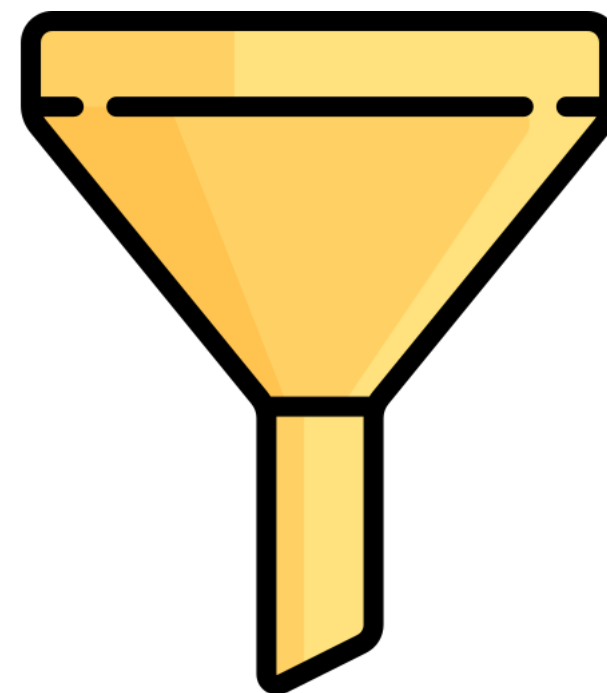
**narrow**  
(*nar-row*)

Word Class  
(adjective)

Pronunciation / Syllables

## Definition:

Something that is narrow measures a very small distance from one side to the other, especially compared to its length or height.



The class used the **narrower** funnel.

Synonym:

cramped

tight

Antonym:

free

giving

Prefix / Suffix:

-ly

-ing

Rhyme:

arrow

sparrow

Link Word:

street

river



# Shinobi Word of the Day

Word of the Day:

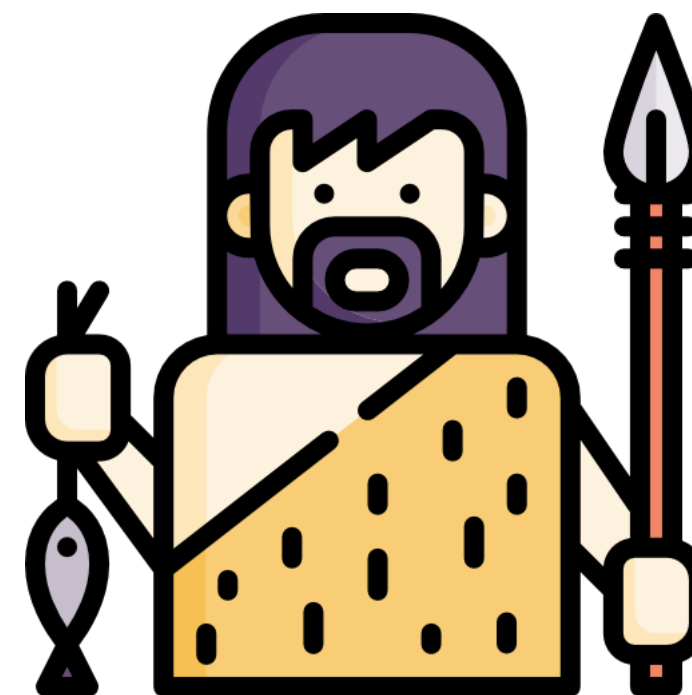
Pronunciation / Syllables

**savage**  
(sav-age)

Word Class  
(adjective)

Definition:

Someone or something that is savage is extremely cruel, violent, and uncontrolled.



The class learned that prehistoric civilizations utilized **savage** methods for hunting and gathering.

Synonym:

barbaric

fierce

Antonym:

peaceful

tame

Prefix / Suffix:

-ry

-ly

Rhyme:

lavage

Link Word:

attack

wave

# Vocabulary Laboratory



Describe / Definition:

Use it in a sentence:

Focus Word (write below):

Word Class:

**Synonyms:**

(words with same / similar meaning)

**Antonyms:**

(words with opposite meaning)

**Draw your sentence:**

**Rhymes:**

(words that sound the same)

**Link Words:**

(Example: football = pitch, team, player)

# Vocabulary Visualiser

Draw the  
**Grasshopper** words  
and bring them to life.



Word: brave

Word: explore

Word: couple

Word: glow





# Vocabulary Visualiser

Draw the **Shinobi**  
words and bring  
them to life.



Word: crumble

Word: narrow

Word: forgive

Word: savage



# Matching Meanings

Draw lines from the **Grasshopper** words to their definitions.



## Grasshopper Word

## Grasshopper Definitions

arrive

If you refer to a \*\*\* of people or things, you mean two or approximately two of them, although the exact number is not important or you are not sure of it.



brave

When a person or vehicle \*\*\* at a place, they come to it at the end of a journey.



couple

If something \*\*\*, it produces a dull, steady light.



explore

If you \*\*\* a place, you travel around it to find out what it is like.



glow

Someone who is \*\*\* is willing to do things which are dangerous, and does not show fear in difficult or dangerous situations.



# Matching Meanings

Draw lines from the  
**Shinobi** words to  
their definitions.



## Shinobi Word

## Shinobi Definitions

abhorrent

If you \*\*\* someone who has done something bad or wrong, you stop being angry with them and no longer want to punish them.



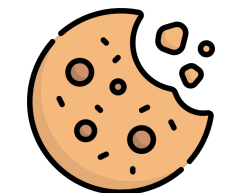
crumple

Something that is \*\*\* measures a very small distance from one side to the other, especially compared to its length or height.



forgive

If something \*\*\*, or if you crumble it, it breaks into a lot of small pieces.



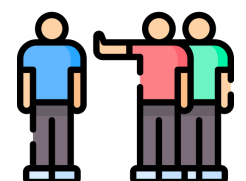
narrow

Someone or something that is \*\*\* is extremely cruel, violent, and uncontrolled.



savage

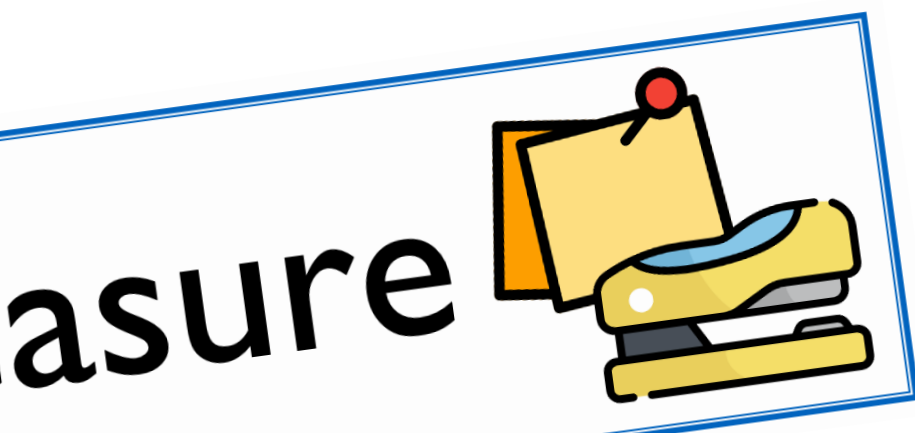
If something is \*\*\* to you, you hate it very much or consider it completely unacceptable.





# Display Slips

The following slides are for classroom display. As you teach each Word of the Day, words can be displayed in the classroom to enable pupils to use the taught vocabulary in an independent manner.





arrive

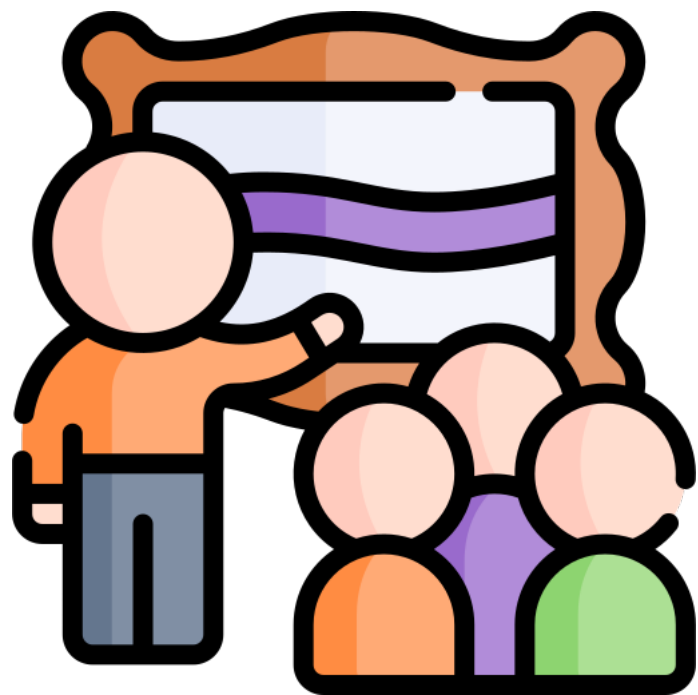


brave





couple

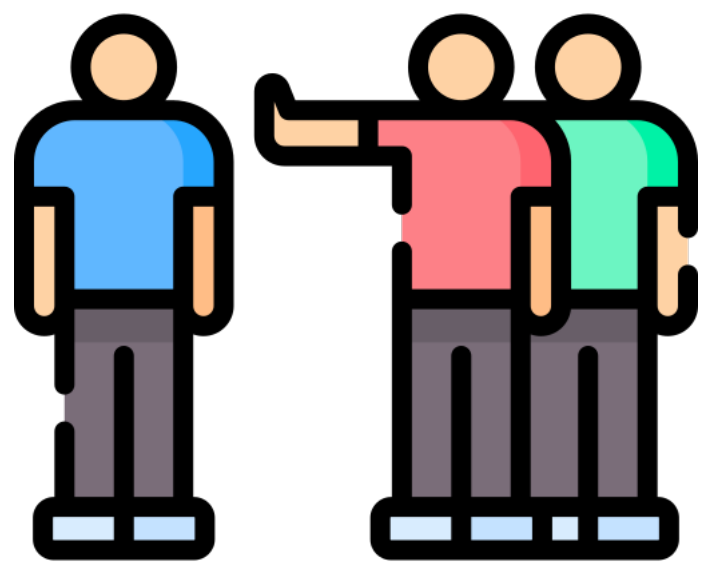


explore





# glow

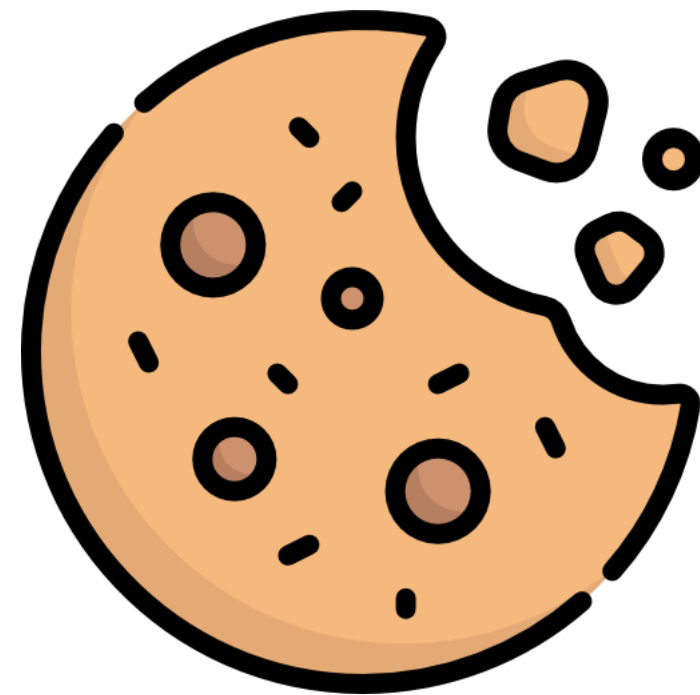


# abhorrent





crumble



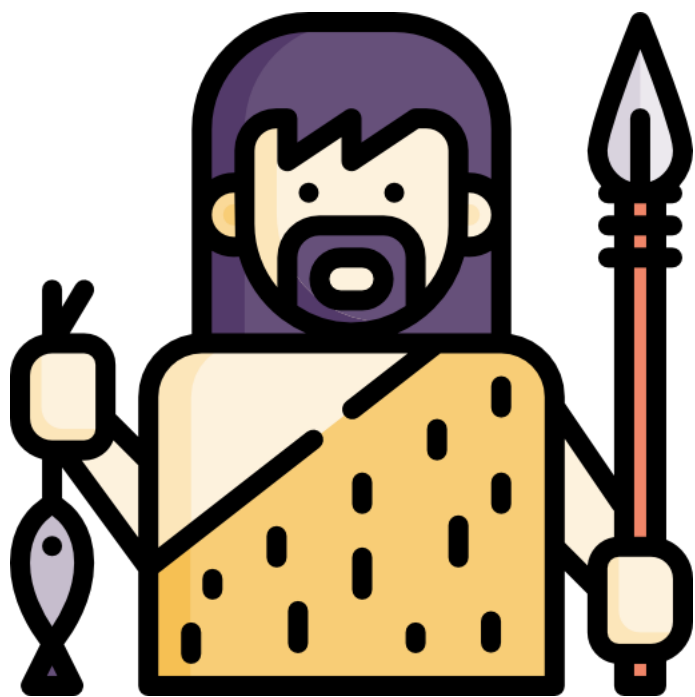
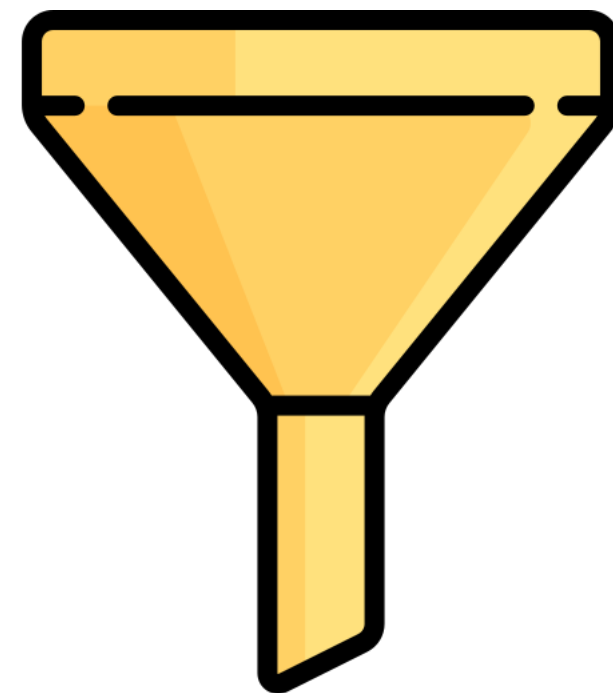
forgive







# narrow



# savage





# Font Variation

The following display slips contain the same words, but have a more regular font, which have a more regular formation of 'a' and 'g'. Futura is the name of the font.




worried



opini

asure



dia





arrive

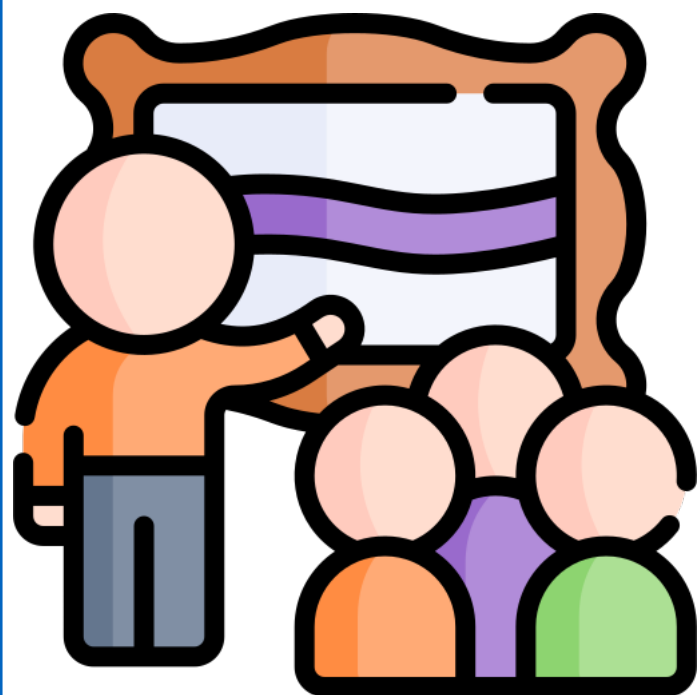
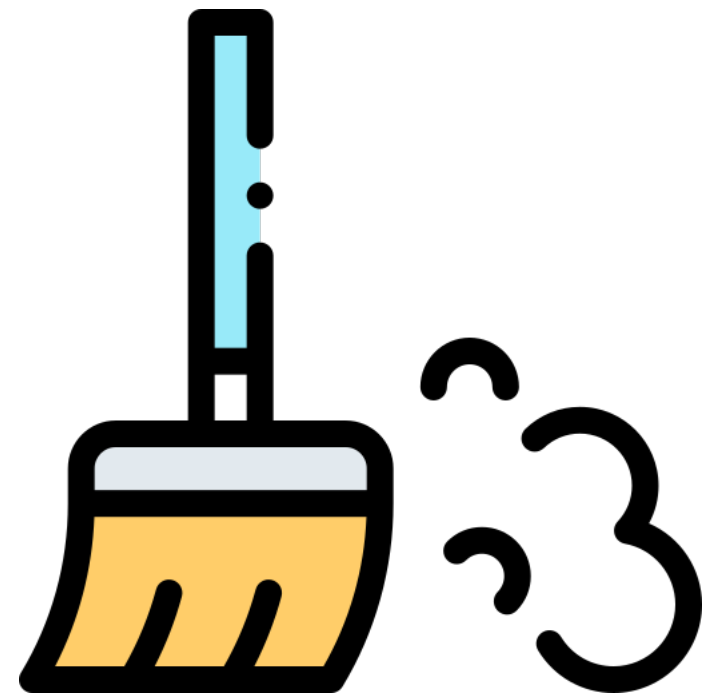


brave





couple

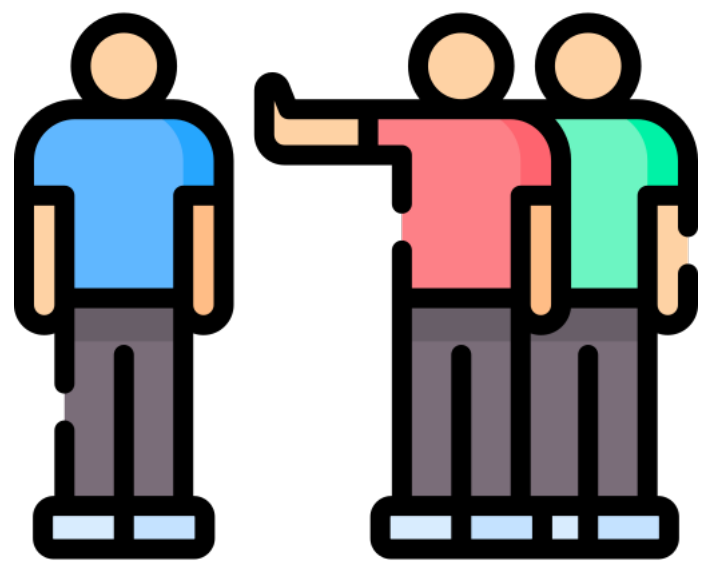


explore





# glow

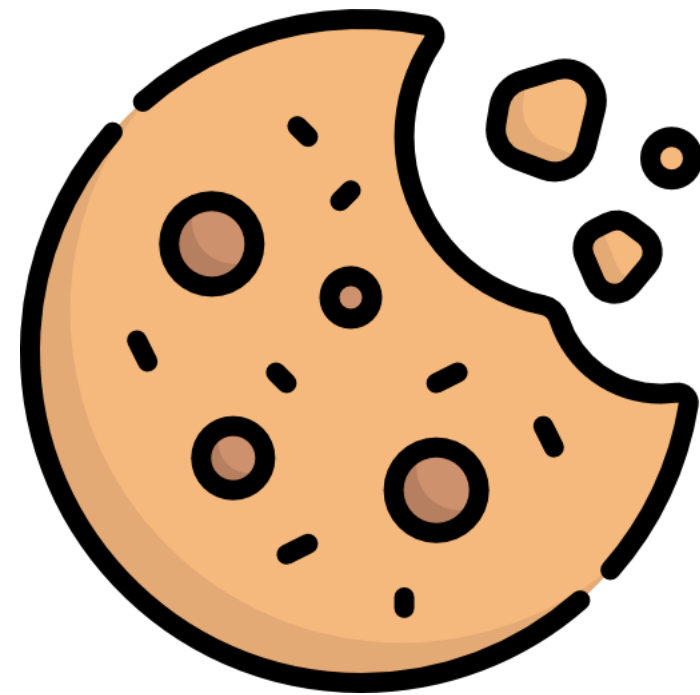


# abhorrent





# crumble

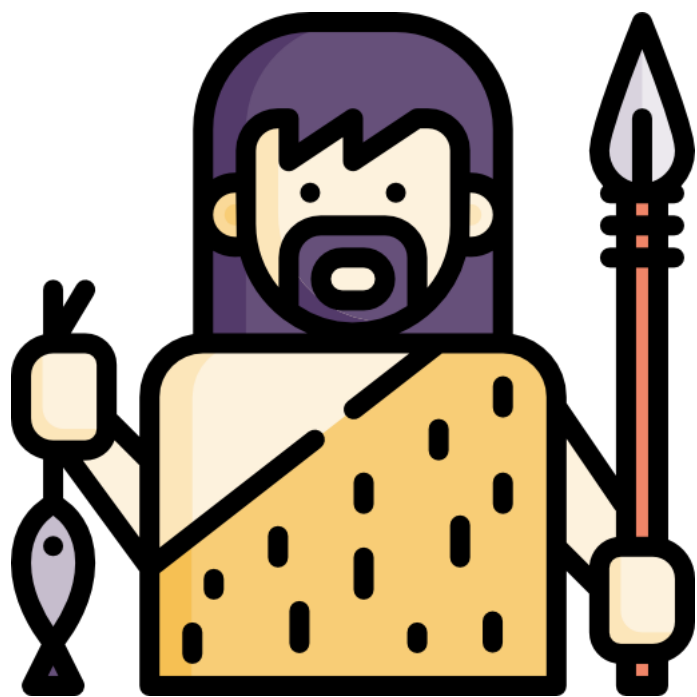
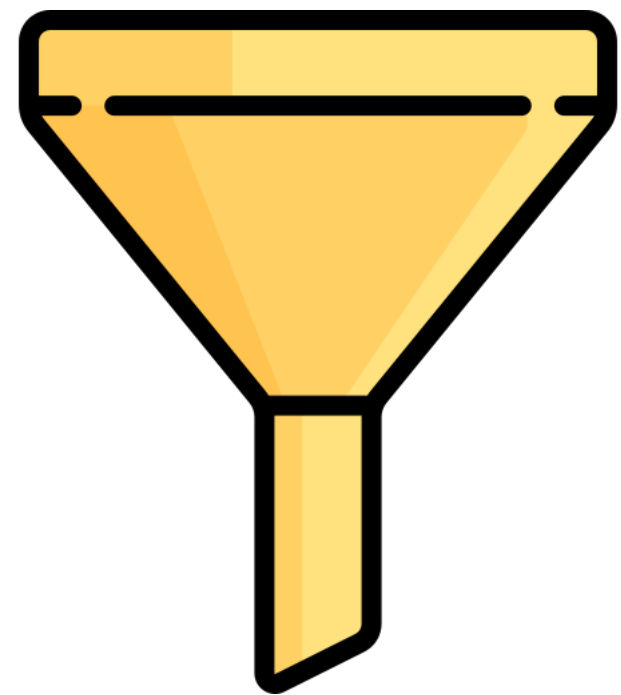


# forgive





# narrow



# savage

